

EMCO-Simplatroll™

POWERMECH
ENGINEERING

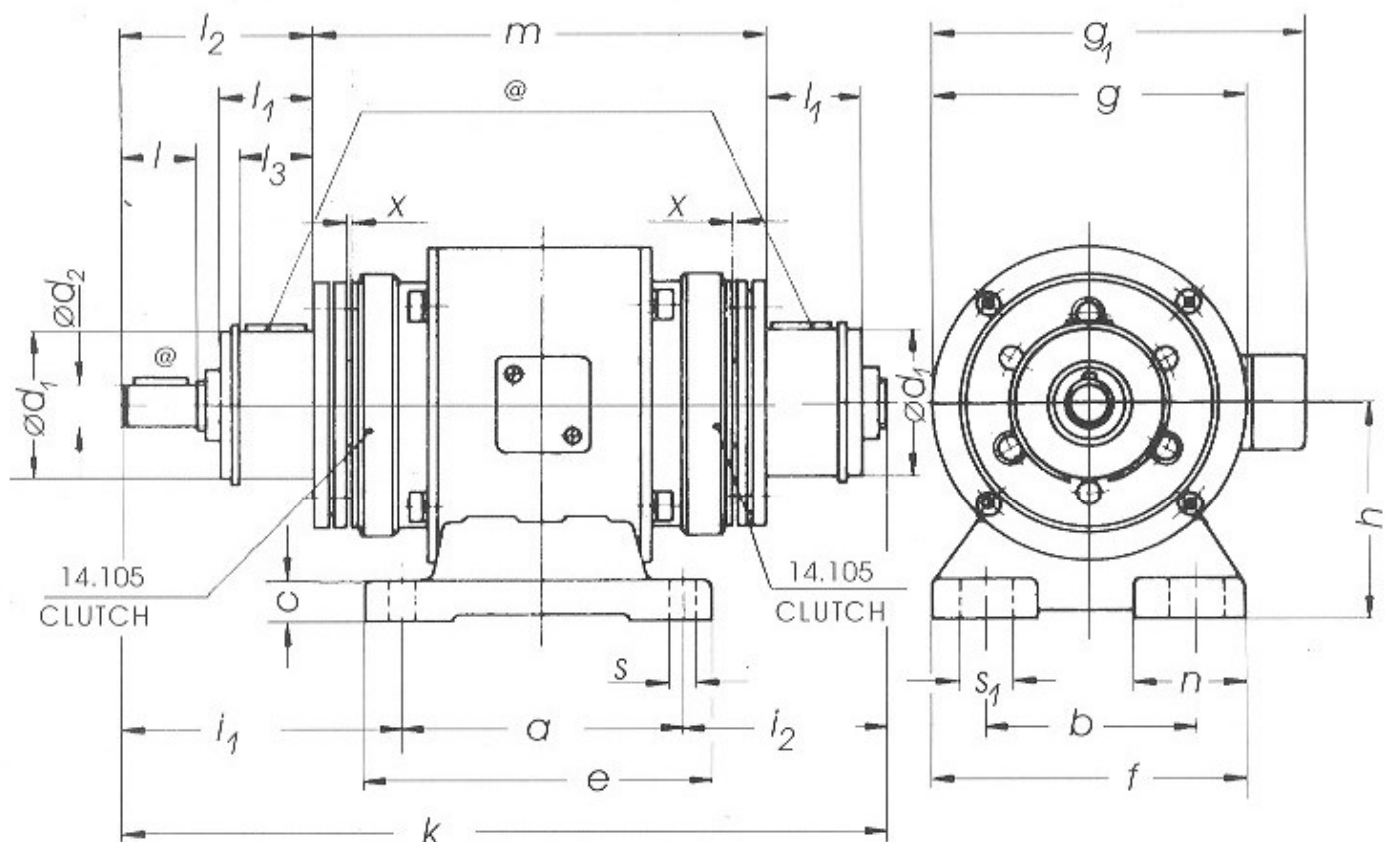
INDUSTRIAL ELECTROMAGNETIC BRAKES & CLUTCHES

E-mail: info@powermechengineering.com

DOUBLE CLUTCH UNIT

EMCO SIMPLATROLL
TYPE : 14.128

DIMENSIONS & PARAMETERS (All in mm)



SIZE	Torque Nm	P Watt 20°C	a	b	c	d _{1,6}	d _{2,6}	e	f	g	g ₁	h	i ₁	i ₂	k	l	l ₁	l ₂	l ₃	m	n	s	s ₁	x
06	7.5	15	75	55	10	38	11	90	80	80	122	55	64	39	178	25	20	45.5	17	112.1	27.5	6.5	13.5	0.25
08	15	20	90	65	10	45	14	105	90	100	142	65	77.5	47.5	215	30	25	56	22	133.1	27.5	6.5	13.5	0.25
10	30	28	110	80	14	55	19	130	110	125	168	80	98	57	265	40	30	71.5	26.5	162	32.5	9	15.5	0.3
12	60	35	135	105	17	64	24	160	140	150	192	90	121.5	71.5	328	50	40	92.5	36.5	193.1	35	11.5	20	0.35
16	120	50	160	135	17	75	28	185	175	190	231	112	150	87	397	60	50	112.5	44.5	232.2	42.5	11.5	25	0.4
20	240	68	200	155	18	90	38	230	200	230	272	132	189	108	497	80	60	143.5	53.5	291	45	14	28	0.5
25	480	85	240	192.5	20	115	42	270	240	290	331	160	240	125.5	605.5	110	70	185	63.7	350	47.5	14	28.5	0.5

IMPORTANT : 1Nm = 0.102 kgm = 0.737 lb. ft.
Standard voltages : 24 V. D. C.; 96 V. D. C.; 190 V. D. C.
Other voltages on request

@ Keyways to Indian Standard wherever possible otherwise to DIN or BS.
Specifications are subject to change without notice

ORDERING INFORMATION 1. TYPE 2. SIZE 3. VOLTAGE

Mobile: +91 9940429288

Phone: (044) - 24715461, 42614058

E-mail: info@powermechengineering.com